



# HSBC Precious Metals Investor Symposium 2018

4 December 2018

MORE THAN  
MINING >

# Disclaimer

---

The information presented in this presentation is of a general nature and the forward-looking information, opinions and beliefs of the Company and its affiliates are based on various market related assumptions. Changes in market circumstances after the production of the information may impact on the accuracy thereof. No assurance can therefore be given as to the accuracy of any information after publication.

Before relying on the information, investors or potential investors should carefully evaluate the accuracy, completeness and relevance of the information and should preferably obtain professional relevant advice.

The Company, its directors, officers, managers or employees, advisers or representatives accept no responsibility or liability whatsoever for any loss howsoever arising from any use of this presentation or its contents or otherwise arising in connection with this presentation.

This presentation also includes market share and industry data obtained by the Company from industry publications and surveys and the Company does not have access to the facts and assumptions underlying the numerical data, market data and other information extracted from publicly available sources. As a result, the Company is unable to verify such numerical data, market data and other information. The Company assumes no responsibility for the correctness of any market share or industry data included in the materials and presentation.



# CONTENTS



Overview



Styldrift



Maseve



Q3 Production Report



Guidance



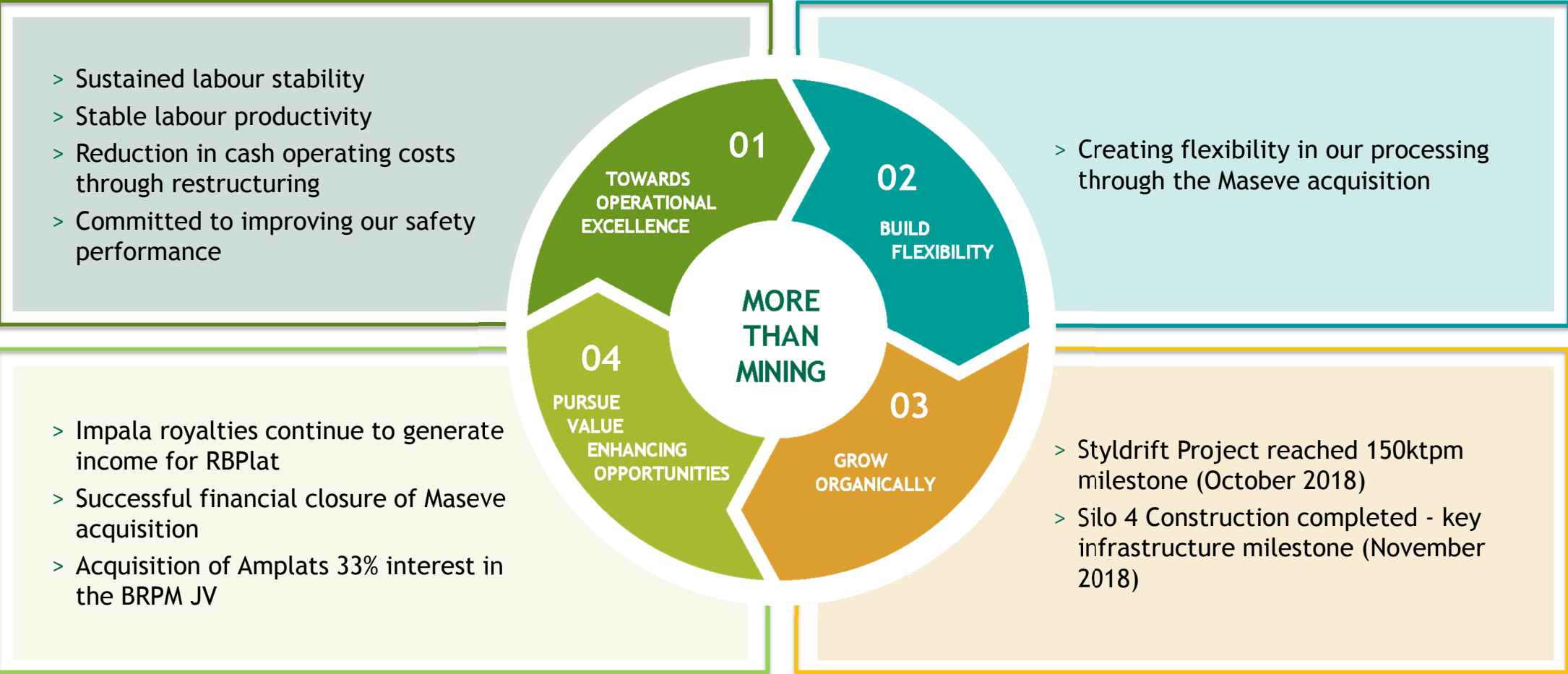


# OVERVIEW





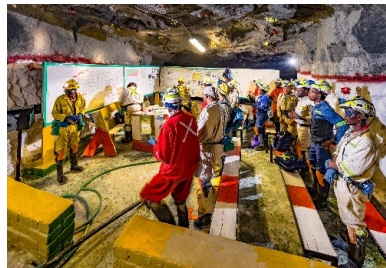
# On track to meeting our strategic objectives





# Business strategy continues to drive operational performance

  
**Community and workforce stability**


  
**Operating costs continue to remain flat**




  
**Focus on improving injury frequency rates**





  
**Styldrift 150ktpm ramp-up achieved**

  
**Maseve acquisition unlocks organic growth path to 230ktpm**





STYLDRIFT



# Key Styldrift life of mine infrastructure progress

Description	150ktpm	230ktpm	Completion date
<b>Surface infrastructure</b>			
Main shaft	Complete		
Offices & changehouse	Complete		
Overland belt	Complete		
Services shaft	Complete		
Stormwater and service water dams	Complete		
Electrical and water supply	Complete		
<b>Underground infrastructure</b>			
Electrical supply	Complete		
Material distribution	Complete		
Silo 1 & 2	Complete		
Silo 3		Under construction	Q3'19
Silo 4	Complete		
Settler 1		Under construction	Q1'19
Settler 2		To be constructed	Q2'20
Temporary water handling (150ktpm)	Complete		
Stoping sections	80% Complete	Under construction	Q2-2020
Workshops	Complete	Under construction	Q3-2019
<b>Ventilation shafts</b>			
Ventilation shaft 1	Complete		
Ventilation shaft 2		Under construction	Q2'19
Ventilation shaft 3	Complete		

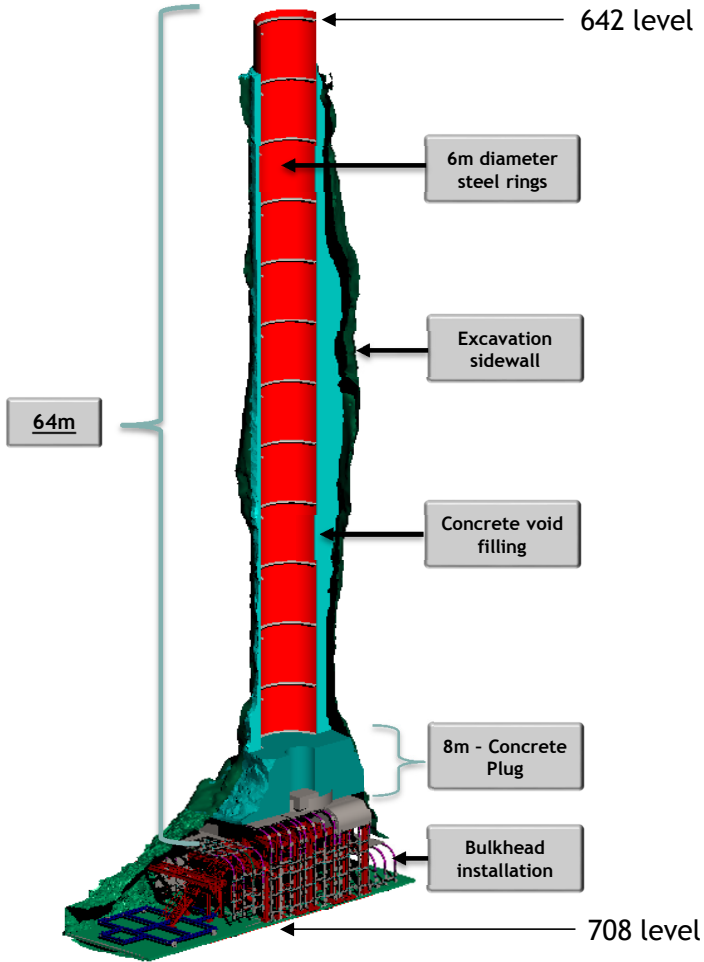




# Innovative solution to Silo 4 geotechnical conditions

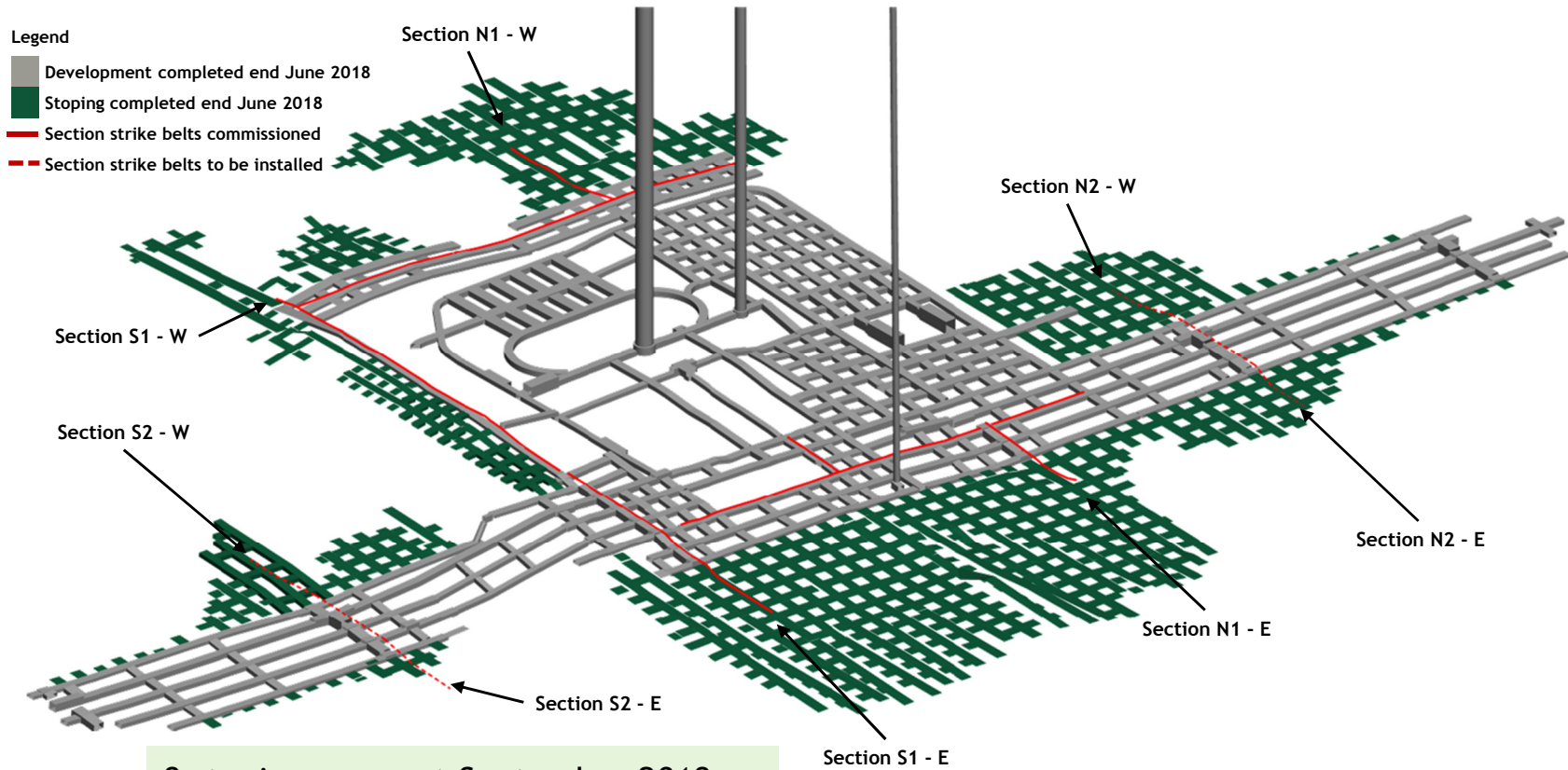


- > Challenging geotechnical conditions
- > Successful rehabilitation
- > Commissioned in November
- > Don't anticipate similar issues with Silo 3



Silo 4 rehabilitation methodology

# 150ktpm milestone reached



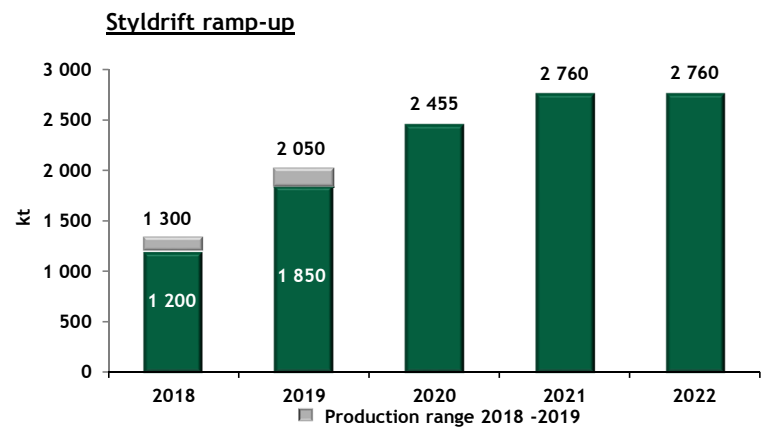
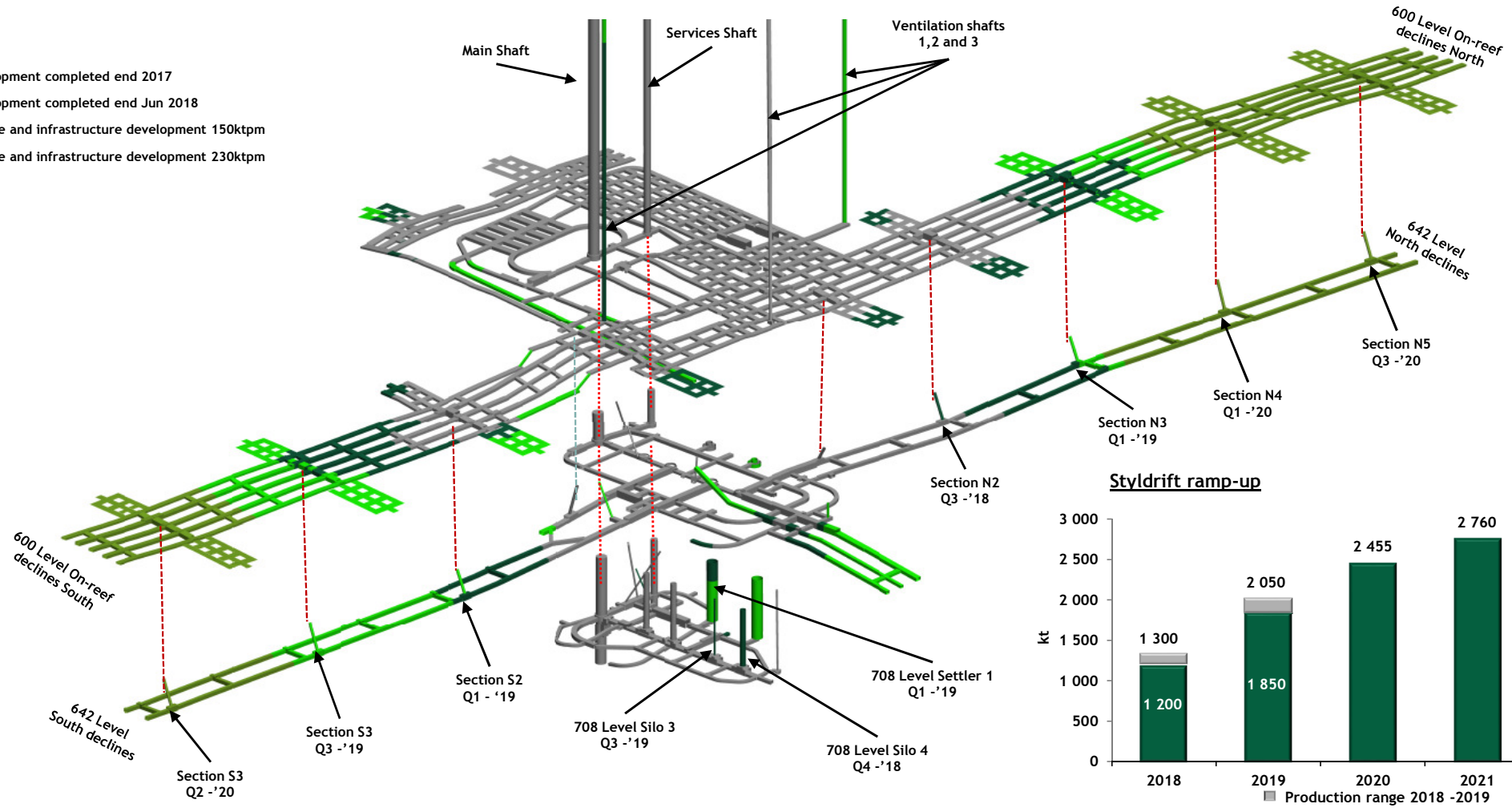
8 stoping crews at September 2018  
> 1 110kt of Merensky ore from stoping  
> 135 000m<sup>2</sup> mined





# Key milestone dates for Styldrift ramp-up to 230ktpm

- Legend**
- Development completed end 2017
  - Development completed end Jun 2018
  - Decline and infrastructure development 150ktpm
  - Decline and infrastructure development 230ktpm



# Project and Operations - Management and control environments

Focused, well resourced project and operational management environments

- > OHSSAS 18001 Certified
- > ISO 14001 Certified
- > Stringent QA/QC systems, standards and controls (design, construction, commissioning and operation)
- > All statutory COP's in place
- > Standards and SOP's in place
- > Integrated SCADA system
  - Conveyors
  - Winders
  - Silo's
  - Ventilation and fire detection
- > Integrated SAP asset and fleet management system implemented
  - Fixed plant
  - Mobile plant
- > Fully functional shaft control room
- > Regular OEM over inspections on fixed and mobile plant

## Technology key to driving safety & operational efficiency:

- > Integrated high speed, high capacity data and digitalisation backbone
- > Safety
  - Collision Avoidance System (CAS)
  - Lamp room asset tracking
  - On board fleet cameras
  - TRAKA key management system
- > Operations, Asset and Fleet Management
  - Real time telemetry - fleet and operational performance
  - Asset tracking
  - Live HD video feed at key infrastructure
- > Integrated data analytics - improved scheduling & operational decision making



**MASEVE**

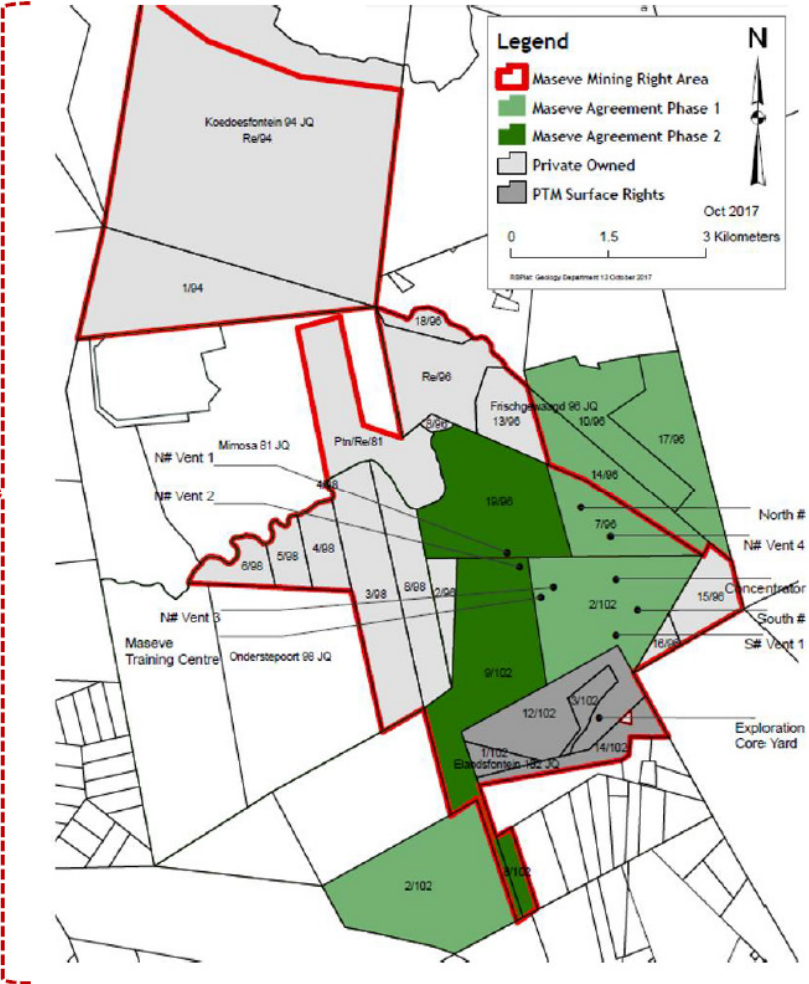
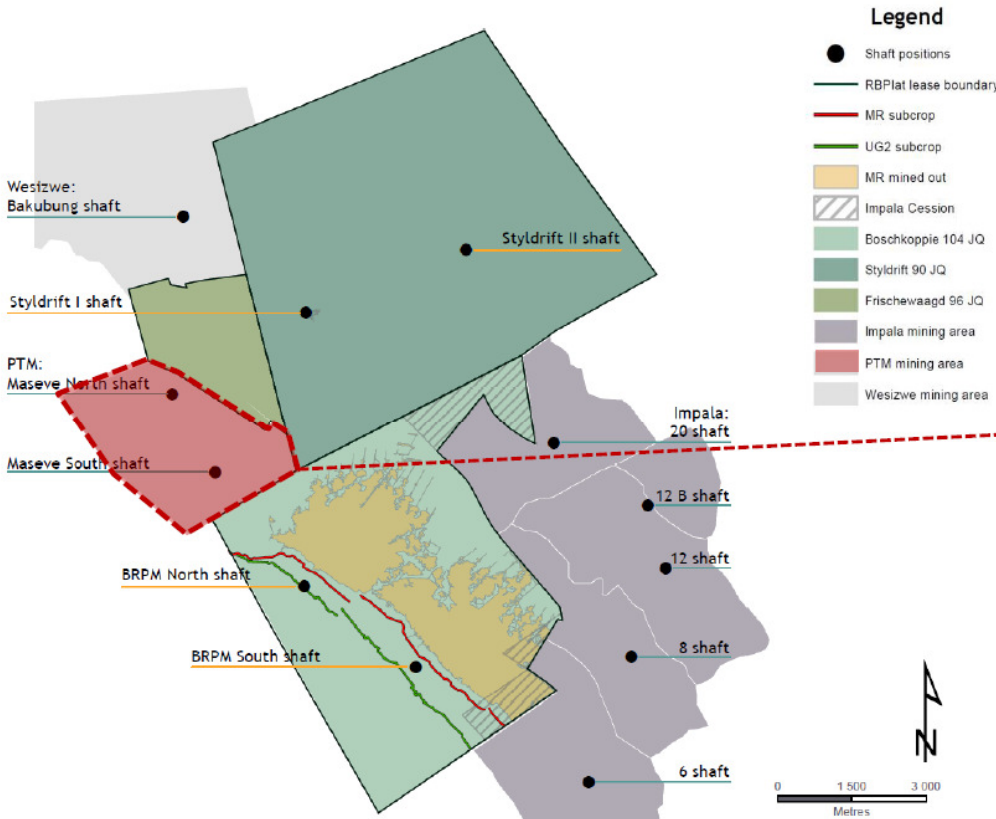


**ROYAL BAFOKENG  
PLATINUM**  
MORE THAN MINING





# Geographic location relative to RBPlat -BRPM JV





# Key Maseve assets

## Mining related assets include:

- > Concentrator plant and associated surface infrastructure and tailings storage facility
- > North and South shaft surface and underground infrastructure
- > Central offices, stores and training centre
- > Mining and Surface rights
- > Associated power and water infrastructure and allocation

## “Non-mining” related assets include:

- > Hotel and associated amenities
- > Chalets, flats and houses
- > Game farm
- > Small business centre

- > Concentrator plant has been fully operational since August 2018
- > North & South shafts (including associated infrastructure) currently on care and maintenance



## Key benefits:

- > Capital efficient with infrastructure synergies with the BRPM JV
- > **Ramp-up Styldrif to 230ktpm**
- > Extend BRPM South shaft Merensky LOM by 12 - 18 months
- > Option to upgrade concentrator to 160ktpm
- > Potential to mine Maseve ore body selectively given technical and commercial considerations
- > Opportunity for early access into Frischgewaagd ore body

Technical due diligence conducted by independent specialists on all infrastructure found construction of assets to be of good quality and generally well maintained with no material issues or fatal flaws:

- > DRA - Surface & underground infrastructure
- > Knight Piesoldt - Tailings storage facility
- > ERM - Business and Environmental risk

# Q3 PRODUCTION REPORT





# Quarterly review and production report for the period 1 July to 30 September 2018

Description	Unit	Unaudited quarter ended 30 September 2018	Unaudited quarter ended 30 September 2017	Quarter 3 2018 vs. Quarter 3 2017 % Change	Unaudited year to date ended 30 September 2018	Unaudited year to date ended 30 September 2017	YTD 2018 vs. YTD 2017 % Change
<b>Safety</b>							
SIFR (/1,000,000 hrs)	rate	2.42	2.45	1.2	2.15	1.70	(26.5)
LTIFR (/1,000,000 hrs)	rate	3.02	3.68	17.9	2.80	2.98	6.0
<b>Production</b>							
Tonnes delivered to concentrators	kt	939	793	18.4	2 456	2 266	8.4
BRPM	kt	583	644	(9.5)	1 697	1 879	(9.7)
Styldrift	kt	356	149	138.9	759	387	96.1
Total tonnes milled	kt	981	825	18.9	2 510	2 301	9.1
BRPM	kt	611	670	(8.8)	1 734	1 907	(9.1)
Styldrift	kt	370	155	138.7	776	394	97.0
Merensky	kt	875	824	6.2	2 188	1 857	17.8
UG2	kt	106	147	27.9	321	445	27.9
% UG2 of total tonnes milled	%	11	18	39.4	13	19	33.9
4E built-up head grade	g/t	3.85	3.91	(1.5)	3.93	3.84	2.3
4E built-up head grade - BRPM	g/t	4.14	4.13	0.2	4.16	4.07	2.2
4E built-up head grade - Styldrift	g/t	3.36	2.98	12.8	3.36	2.71	24.0
4E built-up head grade - MER	g/t	3.83	3.88	(1.3)	3.89	3.82	1.8
4E built-up head grade - UG2	g/t	4.04	4.05	(0.2)	4.06	3.91	3.8
Recovery- 4E total concentrating	%	84.5	86.1	(1.9)	84.6	85.8	(1.4)

# Quarterly review and production report for the period 1 July to 30 September 2018

Description	Unit	Unaudited quarter ended 30 September 2018	Unaudited quarter ended 30 September 2017	Quarter 3 2018 vs. Quarter 3 2017 % Change	Unaudited year to date ended 30 September 2018	Unaudited year to date ended 30 September 2017	YTD 2018 vs. YTD 2017 % Change
<b>Metals in concentrate produced</b>							
<b>BRPM JV</b>							
4E	koz	102.4	89.3	14.7	267.0	243.8	9.5
Platinum	koz	66.6	57.7	15.4	173.1	157.1	10.2
Palladium	koz	27.1	23.8	13.9	71.0	65.3	8.7
Rhodium	koz	5.5	5.1	7.8	14.6	14.3	2.1
Gold	koz	3.2	2.6	23.1	8.3	7.2	15.3
Iridium	koz	1.8	1.7	5.9	4.8	4.8	0.0
Ruthenium	koz	9.3	9.0	3.3	24.9	24.5	1.6
Nickel	kt	0.681	0.556	22.5	1.773	1.464	21.1
Copper	kt	0.430	0.360	19.4	1.111	0.959	15.8
<b>BRPM</b>							
4E	koz	69.5	77.0	(9.7)	197.9	216.1	(8.4)
Platinum	koz	45.1	49.8	(9.4)	128.1	139	(7.8)
Palladium	koz	18.4	20.5	(10.2)	52.6	57.9	(9.2)
Rhodium	koz	3.9	4.5	(13.3)	11.2	12.9	(13.2)
Gold	koz	2.1	2.2	(4.5)	6.0	6.3	(4.8)
Iridium	koz	1.3	1.5	(13.3)	3.7	4.3	(14.0)
Ruthenium	koz	6.7	7.9	(15.2)	19.1	22	(13.2)
Nickel	kt	0.421	0.450	(6.4)	1.208	1.200	0.7
Copper	kt	0.273	0.297	(8.1)	0.776	0.800	(3.0)



# Quarterly review and production report for the period 1 July to 30 September 2018

Description	Unit	Unaudited quarter ended 30 September 2018	Unaudited quarter ended 30 September 2017	Quarter 3 2018 vs. Quarter 3 2017 % Change	Unaudited year to date ended 30 September 2018	Unaudited year to date ended 30 September 2017	YTD 2018 vs. YTD 2017 % Change
<b>Metals in concentrate produced</b>							
<b>Styldrift</b>							
4E	koz	32.9	12.2	169.7	69.1	27.8	148.6
Platinum	koz	21.5	7.9	172.2	45.0	18.1	148.6
Palladium	koz	8.7	3.3	163.6	18.4	7.4	148.6
Rhodium	koz	1.6	0.6	166.7	3.4	1.4	142.9
Gold	koz	1.1	0.4	175.0	2.3	0.9	155.6
Iridium	koz	0.5	0.2	150.0	1.1	0.5	120.0
Ruthenium	koz	2.6	1.1	136.4	5.8	2.5	132.0
Nickel	kt	0.260	0.106	145.3	0.565	0.264	114.0
Copper	kt	0.157	0.063	149.2	0.335	0.159	110.7
<b>Cash operating costs*</b>							
Cash operating cost	R'm	761	724	(5.1)	2 103	2 153	2.3
Cash operating cost / tonne milled	R/t	1 245	1 081	(15.2)	1 213	1 129	(7.4)
Cash operating cost / 4E ounce	R/oz	10 939	9 393	(16.5)	10 622	9 970	(6.5)
Cash operating cost / Pt ounce	R/oz	16 864	14 535	(16.0)	16 407	15 495	(5.9)

\*Costs are calculated excluding Styldrift I on-reef development tonnes, ounces and costs

# Quarterly review and production report for the period 1 July to 30 September 2018

Description	Unit	Unaudited quarter ended 30 September 2018	Unaudited quarter ended 30 September 2017	Quarter 3 2018 vs. Quarter 3 2017 % Change	Unaudited year to date ended 30 September 2018	Unaudited year to date ended 30 September 2017	YTD 2018 vs. YTD 2017 % Change
<b>Capital expenditure</b>							
Total capital	R'm	945.8	613.0	(54.3)	2 325.9	1 460.0	(59.3)
Expansion (Styl drift)	R'm	877.5	578.1	(51.8)	2 179.6	1 356.0	(60.7)
Replacement	R'm	11.1	9.7	(14.4)	32.0	20.0	(60.0)
Stay-in-business (SIB)	R'm	57.2	25.2	(127.0)	114.3	84.1	(36.0)
BRPM mine	R'm	20.7	20.1	(3.0)	49.1	60.7	19.1
Styl drift mine	R'm	25.0	0.3	NM	39.8	5.2	(671.7)
Maseve mine	R'm	0.5	0	-	0.5	0.0	-
Concentrator	R'm	11.0	4.8	(129.2)	24.9	18.2	(36.8)
BRPM SIB as a % of operating cost	%	2.7	2.8	2.0	2.3	2.8	17.2



# GUIDANCE



# Guidance for FY2018

---

- > Upper end of production guidance for the full year lowered to between 3.35Mt and 3.45Mt
  - Grade is forecast at 3.95g/t to 4.00g/t (4E)
  - 4E metals of 370koz to 380koz
- > Capex for the year is estimated at R3.35 billion to R3.40 billion including capitalised operating costs at Styldrifft
- > SIB expenditure forecast to remain at 4% to 5% of operating cost