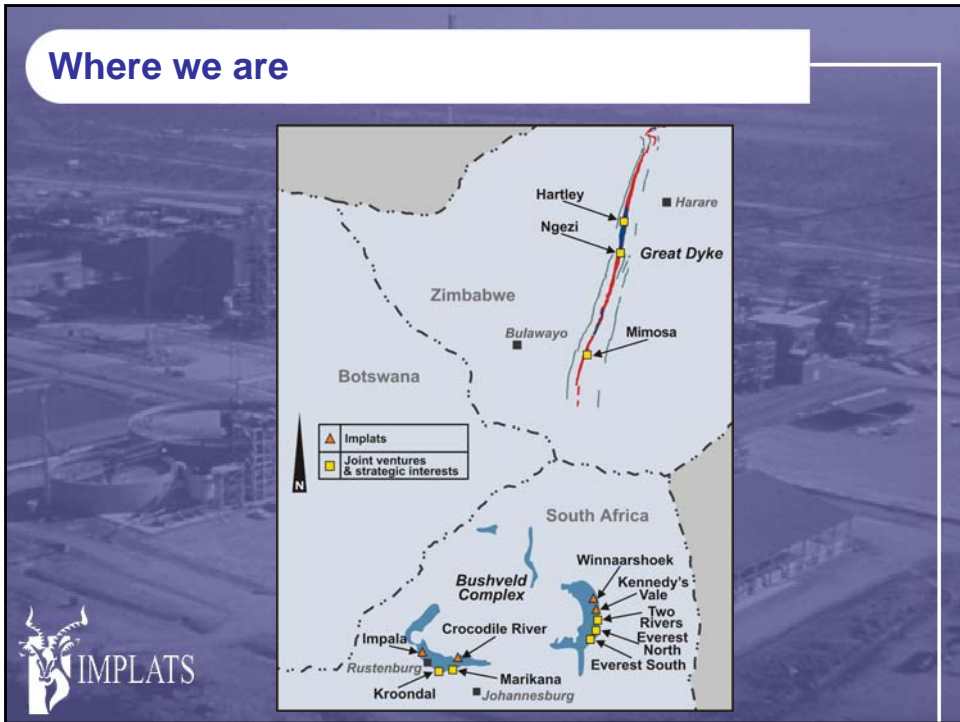


Zimplats – Les Paton

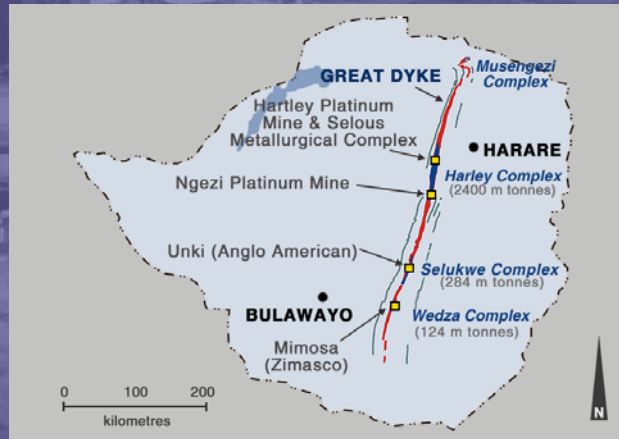


Where we are

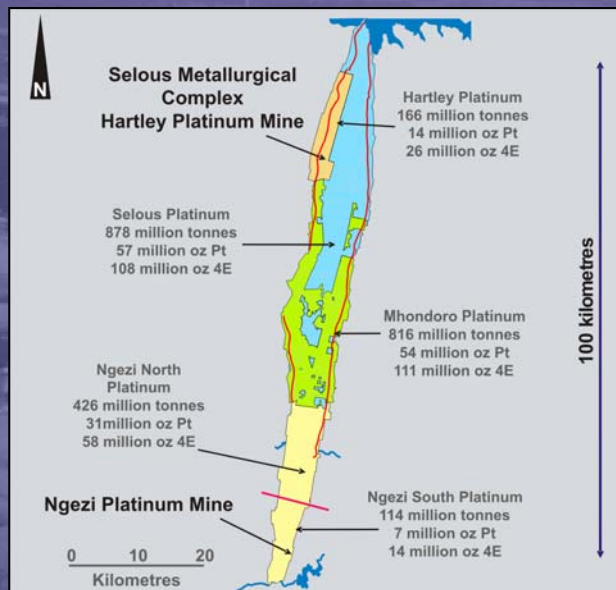


Platinum in Zimbabwe

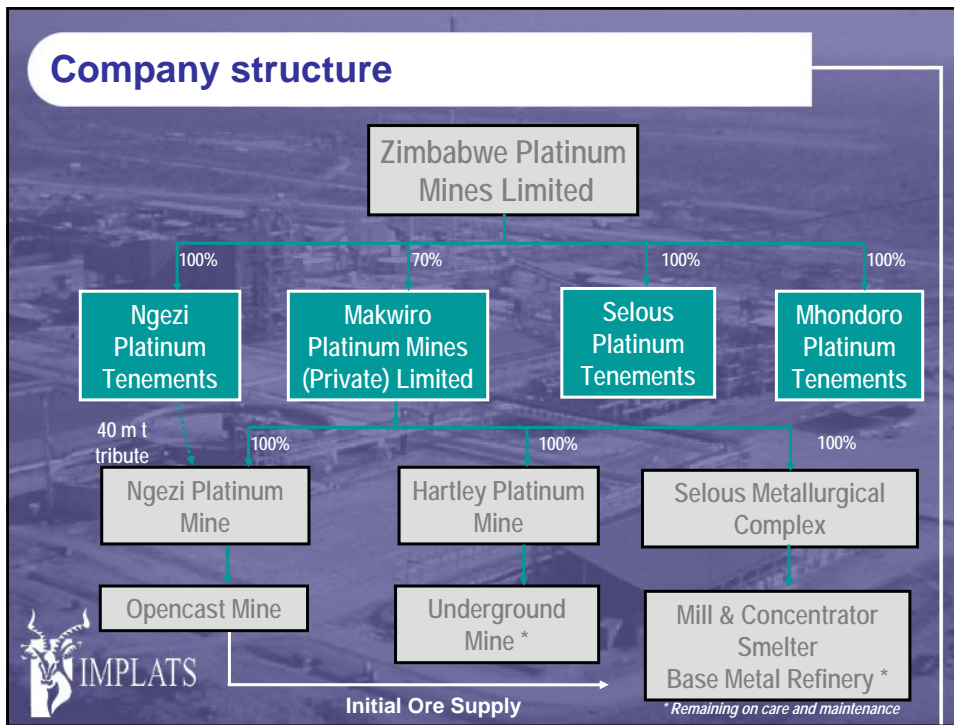
- ❖ Through Zimplats and Mimosa, Implats has access to 85% of the pgm mineralisation on the Great Dyke



Hartley geological complex

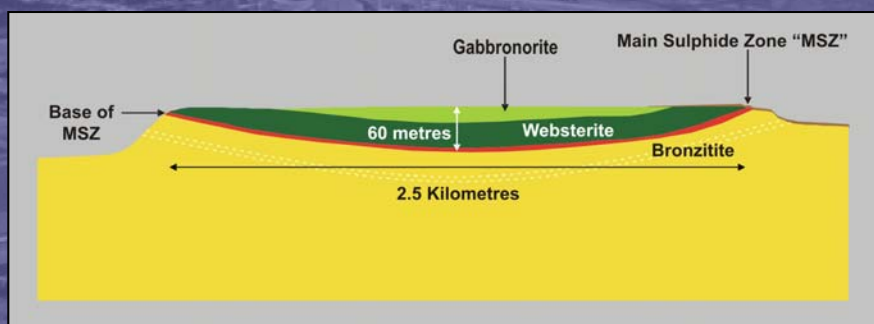


Company structure



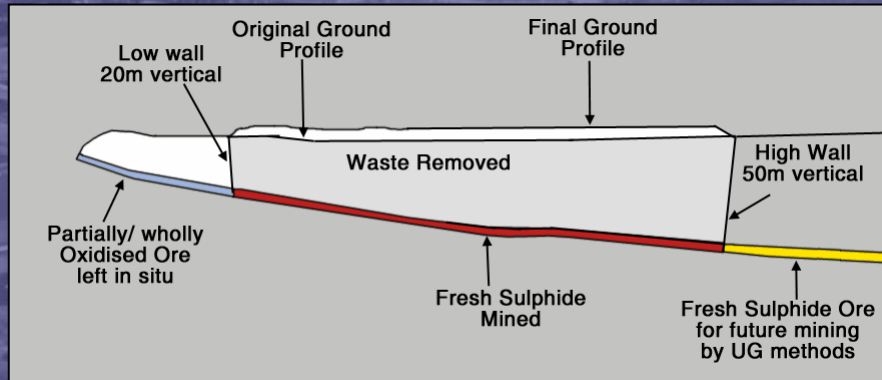
Makwiro - Ngezi Platinum Mine

Cross Section of the Ngezi Opencast Mine



Makwiro - Ngezi Platinum Mine

E-W Section across Pit, looking N



Makwiro production - phase one

NGEZI OPENCAST MINE

2.2 million tons ore trucked per annum

SELOUS METALLURGICAL COMPLEX MILL AND CONCENTRATOR

93,000 tons of concentrate per annum

SELOUS METALLURGICAL COMPLEX SMELTER

3,100 tons of matte per annum

IMPALA REFINING SERVICES LIMITED

**Matte Exported
Containing**
 98,000 oz Pt
 82,000 oz Pd
 12,000 oz Au
 8,000 oz Rh
 1,300 t Ni
 1,000 t Cu



14

Opencast mining



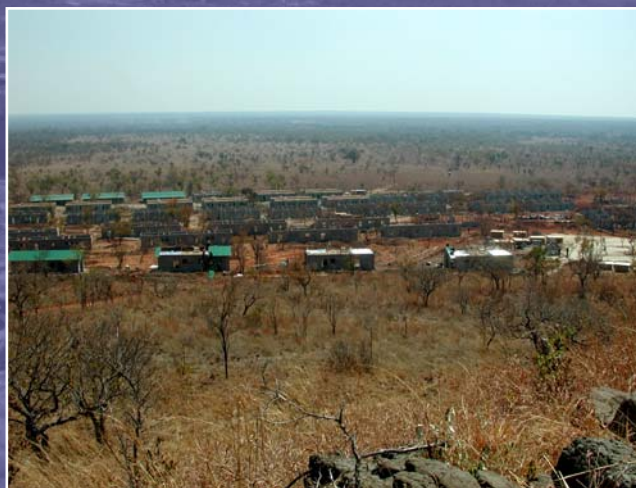
Crushing station

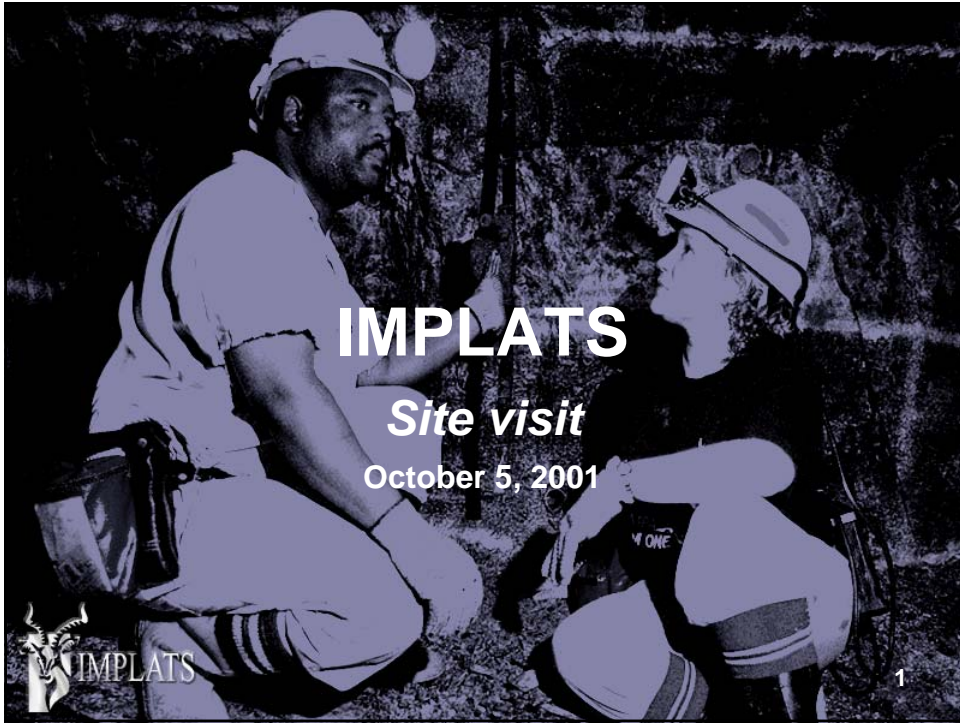


Road



Mine village





IMPLATS

Site visit

October 5, 2001

